



WE VALUE INCLUSION

Inclusion is a way of thinking and acting that allows every individual to feel accepted, valued and safe. An inclusive community consciously evolves to meet the changing needs of its members. Through recognition and support, an inclusive community provides meaningful involvement and equal access to the benefits of citizenship. In Manitoba, we embrace inclusion as a means of enhancing the well-being of every member of the community. By working together, we strengthen our capacity to provide the foundation for a richer future for all of us.

- The Public Schools Amendment Act
(Appropriate Educational Programming)



SUNRISE
SCHOOL DIVISION

CONTACT US WITH YOUR QUESTIONS

Sunrise School Division

344-2nd Street North Box 1206
Beausejour, Manitoba R0E 0C0
Toll Free 866-444-5559
204-268-6500



SUNRISE
SCHOOL DIVISION

STUDENT SUPPORT SERVICES

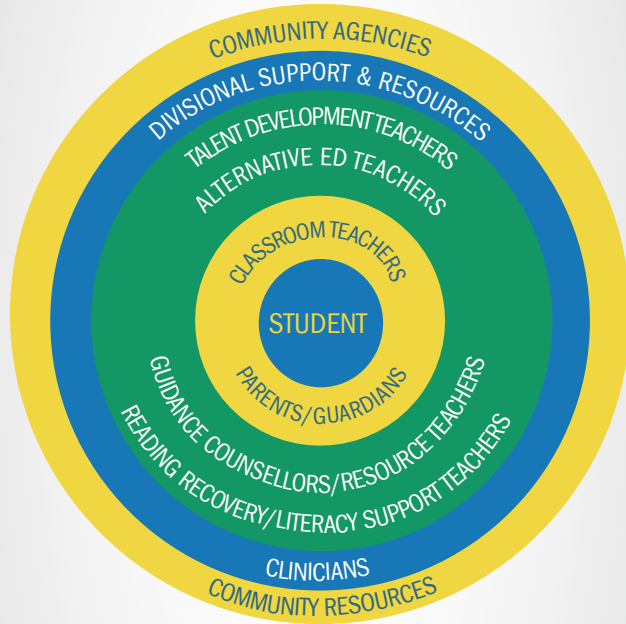


Rising to our potential



STUDENT SUPPORT SERVICES

Student Support Services includes both staff and services provided by the school division to meet the needs of students who have exceptional learning, social/ emotional, behavioural, sensory, physical, cognitive/ intellectual, communication, academic or special health care needs.



OUR INSTRUCTIONAL SUPPORT TEAM



Resource/Learning Support Teachers

Provide direct and indirect services for academic and social emotional learning to students who require extra support in school.



Guidance Counsellors

Provide direct and indirect educational counselling services to students in the areas of personal, academic, social and career development.



Alternative Education Teachers

Provide direct instruction to high school students who learn more effectively in alternate and supportive learning environments.



Talent Development Teachers

Provide direct and indirect support to students who require enhancement or extension to their learning outcomes.



Reading Recovery/Literacy Support Teachers

Provide daily, short-term intervention for students who after one year of instruction are finding the transition into literacy learning a challenge.



SCHOOL CLINICIAN SERVICES OFFERED

- Mental Health Worker
- Occupational Therapy
- Physiotherapy
- Psychology
- Social Work
- Speech Language Pathology

